

BIG FURNACE

The furnace measured a big 7.2 metres wide x 7.2 metres high x 25.8 metres long inside and was made up from 1800 - OKKO SYSTEM 1000 blocks fitted with FAST 600 stainless steel encased insulation blocks. (Ask for publication number 101. FAST 600 for details).

HIGHLY EFFICIENT FURNACE

The furnace was fired on natural gas using 8 - 625,000 K.cals/hour high velocity burners supplied by Consultant Gas Engineers Ltd. of Skelmersdale, Lancs. and fitted by their subsidiary Thermal Hire Ltd.

Readings of gas consumption over the first three heat treatments indicated a thermal efficiency in excess of 40% for loads varying from 100 tons to 250 tons.

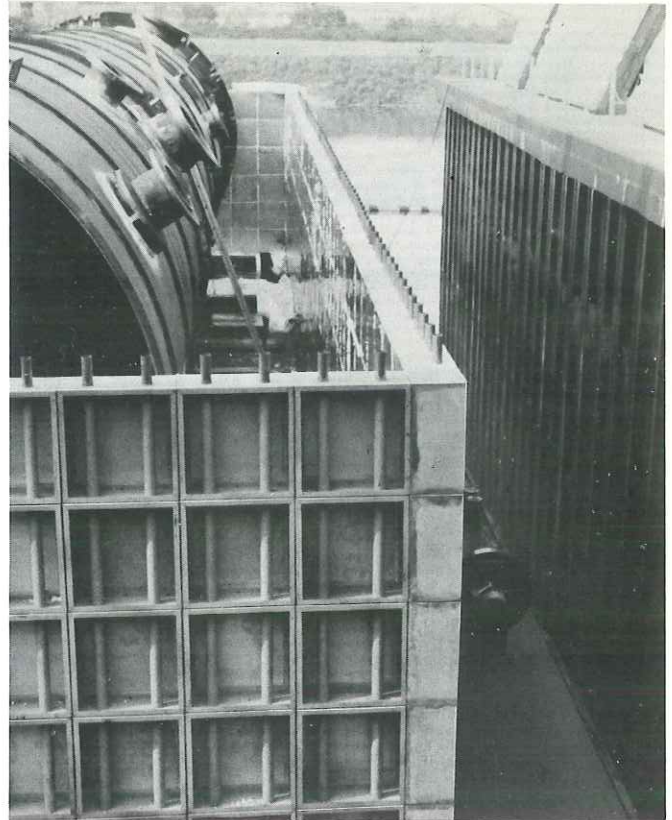
INCREASE IN SIZE MADE EASY

The latest proposal by S.I.F. is to increase the size of the furnace in all three dimensions and re-locate it on a larger pontoon.

This again demonstrates the flexibility of OKKO SYSTEM 1000 and incidently S.I.F. are carrying this operation themselves which shows that the customer could even build his own furnaces.

FURNACE FOR HIRE

It is the intention of S.I.F. to hire the floating OKKO furnace to other large companies who are situated on the vast canal and river networks of EUROPE.



The furnace will be towed by a tug to the customers dock or landing stage, the top of the furnace removed to allow the work to be placed inside, the top closed and heat treatment carried out.

The furnace can accommodate up to 300 tons to a maximum temperature of 750°C.

This again demonstrates the great flexibility of OKKO SYSTEM 1000. We hope that you, the reader, may think so to. Why don't you give us a call and see if OKKO can solve your problem? We think it can!

Send for Publication No. 101 Fast 600
**"FURNACE APPLICATIONS UP TO 800°C
WITH FAST 600 STAINLESS STEEL
ENCASED INSULATION BLOCKS"**



R.T. BULLOCK LIMITED

81 First Avenue,
Pensnett Trading Estate,
Brierley Hill,
West Midlands DY6 7PP England.
Telephone: Kingswinford (03844) 77452.

Publication No. O.N. 101 Fast 600